

MLZ SERIES

Introducing a new type of ceiling cassette for the Multi-Split Series with streamlined interior dimensions and a sharp, sleek appearance.

MLZ-KP25/35/50VG

R32

MLZ-KY20VG



reddot award 2018 winner



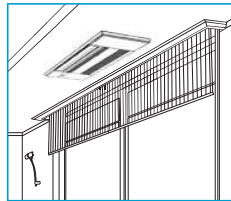
Slim Design KY KP

Industry leading slim body realized a simple design with linear beauty.



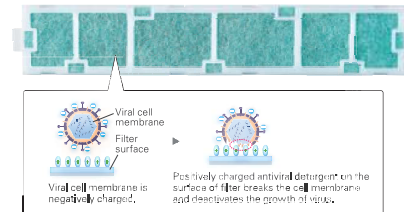
Ceiling Mounted KY KP

Installing the ceiling-mounted MLZ Series unit in a room creates a more spacious feel that enhances room comfort. This overhead format is also an excellent solution when lighting equipment is installed at the centre of the room and fixtures such as book shelves are mounted on wall surfaces.



V Blocking Filter KY

V Blocking Filter with antiviral effect inhibits 99% of adhered virus and other harmful substances, such as bacteria, mold and allergen. Two-layered filter with non-woven fabric and electrostatic filter can effectively capture and remove small particles from the air in your room.



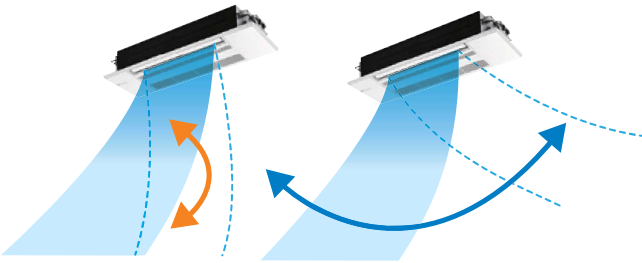
Set Airflow According to Ceiling Height KY KP

Dual-level airflow selection is engineered to accommodate specific ceiling heights. This is a key feature for adjusting airflow effectively when it is either too strong or too weak due to being mismatched with the height of the ceiling.

	20	25	35	50
Standard	2.4m	2.4m	2.4m	2.4m
High ceiling	2.7m	2.7m	2.7m	2.7m

Auto Vane Control KY KP

Outlet vanes can be moved left and right, and up and down using the remote controller. This improved airflow control feature solves the problem of drafts.



Up and Down

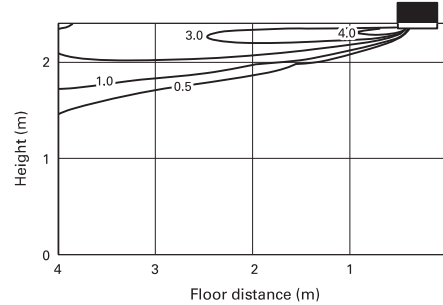
Left and Right

*Only available when Econo Cool is set.

Horizontal Airflow KY KP

The new airflow control completely eliminates that uncomfortable drafty-feeling with the introduction of a horizontal airflow that spreads across the ceiling. The ideal airflow for offices and restaurants.

[Horizontal Airflow]
Model name: MLZ-KP35VG
Ceiling height: 2.4m
Model: Cooling



Weekly Timer Built-in Weekly Timer Function KY KP

Easily set desired temperatures and operation ON/OFF times to match lifestyle patterns. Reduce wasted energy consumption by using the timer to prevent forgetting to turn off the unit and eliminate temperature setting adjustments.

Example Operation Pattern (Winter/Heating mode)

	Mon.	Tues.	Wed.	Thurs.	Fri.	Sat.	Sun.
6:00	ON 20°C	ON 20°C	ON 20°C	ON 20°C	ON 20°C	ON 20°C	ON 20°C
8:00	Automatically changes to high-power operation at wake-up time						
10:00							
12:00	OFF	OFF	OFF	OFF	OFF	ON 18°C	ON 18°C
14:00	Automatically turned off during work hours					Midday is warmer, so the temperature is set lower	
16:00							
18:00	ON 22°C	ON 22°C	ON 22°C	ON 22°C	ON 22°C	ON 22°C	ON 22°C
20:00	Automatically turns on, synchronized with arrival at home					Automatically raises temperature setting to match time when outside-air temperature is low	
22:00							
(during sleeping hours)	ON 18°C	ON 18°C	ON 18°C	ON 18°C	ON 18°C	ON 10°C	ON 10°C
	Automatically lowers temperature at bedtime for energy-saving operation at night						

Settings

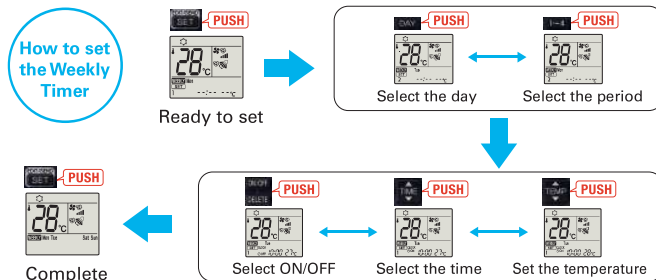
Pattern Settings: Input up to four settings for each day

Settings: •Start/Stop operation •Temperature setting *The operation mode cannot be set.

Easy set-up using dedicated buttons



The remote controller is equipped with buttons that are used exclusively for setting the Weekly Timer. Setting operation patterns is easy and quick.

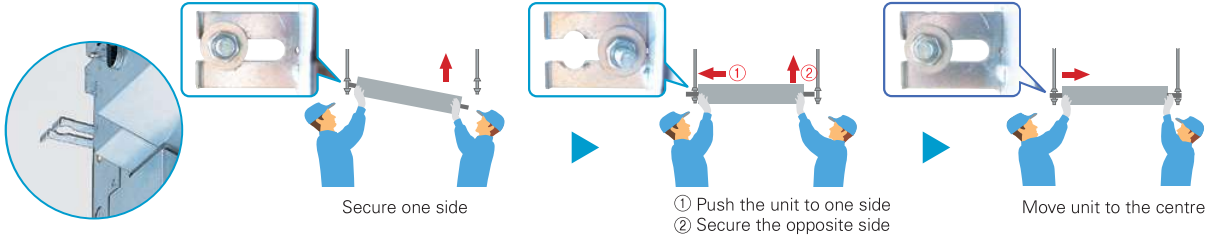


- Start by pushing the "SET" button and follow the instructions to set the desired patterns. Once all of the desired patterns are input, point the top end of the remote controller at the indoor unit and push the "SET" button one more time. (Push the "SET" button only after inputting all of the desired patterns into the remote controller memory. Pushing the "CANCEL" button will end the set-up process without sending the operation patterns to the indoor unit.)
- It takes a few seconds to transmit the Weekly Timer operation patterns to the indoor unit. Please continue to point the remote controller at the indoor unit until all data has been sent.

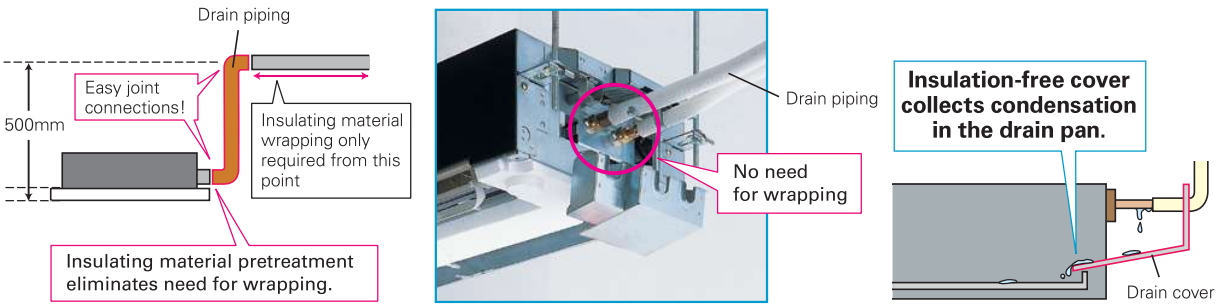
Easy Installation

Temporary Hanging Hook KY KP

Work efficiency has improved during installation.



Refrigerant Piping Supporters + Drain Cover KY KP



High Serviceability KY KP

No need to put off the panel even when the unit has some troubles to be checked inside. Simply open the panel to see the inside of the unit.



Wi-Fi Space

There is space inside the panel for a Wi-Fi interface.

* This image is for MLZ-KY

MLZ SERIES



Indoor Unit **R32**



MLZ-KP25/35/50VG



R32



MLZ-KY20VG

Panel

MLP-444W

MLP-448W

Outdoor Unit



SUZ-M25/35VA



SUZ-M50VA

For Multi Connection Only

Remote Controller



Built in MLZ-KP/KY



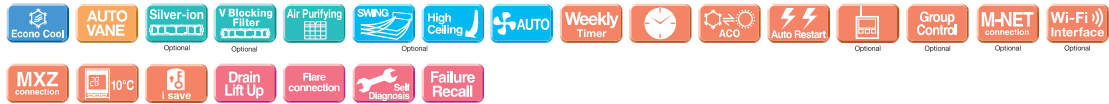
*optional



*optional



*optional



Type	Inverter Heat Pump						
Indoor Unit	MLZ-KY20VG	MLZ-KP25VG	MLZ-KP35VG	MLZ-KP50VG			
Outdoor Unit	For Multi connection only						
Refrigerant	R32 ^(*)						
Power Supply	Outdoor Power supply 230 / Single / 50						
Cooling	Design load	kW	2.5	3.5	5.0		
	Annual electricity consumption ^(**)	kWh/a	141	175	260		
	SEER ^{(**),(*)}		6.2	7.0	6.7		
	Energy efficiency class			A+	A++	A++	
	Capacity	Rated	kW	2.5	3.5	5.0	
		Min-Max	kW	1.4 - 3.2	0.8 - 3.9	1.7 - 5.6	
Total Input	Rated	kW	0.59	0.94	1.38		
Heating (Average Season)	Design load	kW	2.2	2.6	4.3		
	Declared Capacity	at reference design temperature	kW	2.0 (-10°C)	2.3 (-10°C)	3.8 (-10°C)	
		at bivalent temperature	kW	2.0 (-7°C)	2.3 (-7°C)	3.8 (-7°C)	
	Back up heating capacity	at operation limit temperature	kW	2.0 (-10°C)	2.3 (-10°C)	3.8 (-10°C)	
		Rated	kW	0.2	0.3	0.5	
	Annual electricity consumption ^(**)	kWh/a	697	791	1397		
SCOP ^{(**),(*)}		4.4	4.6	4.3			
Energy efficiency class			A+	A++	A+		
Capacity	Rated	kW	3.2	4.1	6.0		
	Min-Max	kW	1.4 - 4.2	1.1 - 4.9	1.7 - 7.2		
Total Input	Rated	kW	0.80	1.10	1.86		
Operating Current (Max)		A	7.2	8.9	13.9		
Indoor Unit	Input	Rated	kW	0.012	0.04	0.04	
		Operating Current(Max)	A	0.12	0.40	0.40	
	Dimensions	H*W*D	mm	194-842-301	185-1102-360	185-1102-360	
	Weight		kg	14	15.5	15.5	
	Air Volume (Lo-Low-Mid-Hi ^(*))	Cooling	m ³ /min	4.3-4.7-5.2-5.6	6.0-7.2-8.0-8.8	6.0-7.3-8.4-9.4	6.0-8.3-9.8-11.4
		Heating	m ³ /min	4.3-4.9-5.5-6.0	6.0-7.0-8.2-9.2	6.0-7.7-8.8-9.9	6.0-8.8-10.3-11.8
	Sound Level (SPL) (Lo-Low-Mid-Hi ^(*))	Cooling	dB(A)	30-32-34-37	27-31-34-38	27-32-36-40	29-36-41-47
		Heating	dB(A)	29-32-35-38	29-27-34-37	26-32-36-40	26-37-42-48
	Sound Level (PWL)	Cooling	dB(A)	40-42-44-50	52	53	59
		Dimensions	H*W*D	mm	34-915-370	24-1200-424	24-1200-424
Weight		kg	3.8	3.5	3.5		
	Dimensions	H*W*D	mm	550-800-285	550-800-285	714-800-285	
Outdoor Unit	Weight		kg	30	35	41	
		Dimensions	H*W*D	mm	550-800-285	550-800-285	714-800-285
	Air Volume	Cooling	m ³ /min	36.3	34.3	45.8	
		Heating	m ³ /min	34.6	32.7	43.7	
	Sound Level (SPL)	Cooling	dB(A)	45	48	48	
		Heating	dB(A)	46	48	49	
	Sound Level (PWL)	Cooling	dB(A)	59	59	64	
		Operating Current (Max)	A	6.8	8.5	13.5	
	Breaker Size	A	10	10	20		
	Ext. Piping	Diameter	Liquid/Gas	mm	6.35/9.52	6.35/9.52	6.35/12.7
Max.Length		Out-In	m	20	20	30	
Max.Height		Out-In	m	12	12	30	
Guaranteed Operating Range (Outdoor)	Cooling	°C	-10~+46	-10~+46	-15~+46		
	Heating	°C	-10~+24	-10~+24	-10~+24		

(*1) Refrigerant leakage contributes to climate change. Refrigerant with lower global warming potential (GWP) would contribute less to global warming than a refrigerant with higher GWP if leaked to the atmosphere. This appliance contains a refrigerant fluid with a GWP equal to 675. This means that if 1kg of this refrigerant fluid would be leaked to the atmosphere, the impact on global warming would be 675 times higher than 1kg of CO₂ over a period of 100 years. Never try to interfere with the refrigerant circuit yourself or disassemble the product yourself and always ask a professional. The GWP of R32 is 675 in the IPCC 4th Assessment Report.

(*2) Energy consumption based on standard test results. Actual energy consumption will depend on how the appliance is used and where it is located.

(*3) SH: Super High

(*4) SEER, SCOP and other related description are based on COMMISSION DELEGATED REGULATION (EU) No.626/2011. The temperature conditions for calculating SCOP are based on "Average Season".

Specification on Warmer/Colder Condition

Type		Inverter Heat Pump				
Indoor Unit		MSZ-RW25VG	MSZ-RW35VG	MSZ-RW50VG		
Outdoor Unit		MUZ-RW25VGHZ	MUZ-RW35VGHZ	MUZ-RW50VGHZ		
Refrigerant		R32 ⁽¹⁾				
Cooling	Design load	kW	2.5	3.5	5.0	
	Annual electricity consumption ⁽²⁾	kWh/a	78	130	230	
	SEER		11.2	9.4	7.6	
		Energy efficiency class	A+++	A+++	A++	
Heating (Warmer Season)	Design load	kW	1.8	2.2	3.3	
	Declared Capacity	at reference design temperature	kW	1.8	2.2	3.3
		at bivalent temperature	kW	1.8	2.2	3.3
		at operation limit temperature	kW	2.6	2.6	4.0
	Back up heating capacity	kW	0.0	0.0	0.0	
	Annual electricity consumption ⁽²⁾	kWh/a	372	469	715	
	SCOP		6.7	6.5	6.4	
		Energy efficiency class	A+++	A+++	A+++	
Heating (Colder Season)	Design load	kW	4.7	5.9	8.8	
	Declared Capacity	at reference design temperature	kW	3.7	4.0	5.6
		at bivalent temperature	kW	3.2	4.0	6.0
		at operation limit temperature	kW	2.6	2.6	4.0
	Back up heating capacity	kW	1.0	1.9	3.2	
	Annual electricity consumption ⁽²⁾	kWh/a	2407	3083	5157	
	SCOP		4.1	4.0	3.5	
		Energy efficiency class	A+	A+	A	

Type		Inverter Heat Pump								
Indoor Unit		MSZ-LN25VG2		MSZ-LN35VG2		MSZ-LN50VG2		MSZ-LN60VG2		
Outdoor Unit		MUZ-LN25VGHZ	MUZ-LN25VGHZ2	MUZ-LN35VGHZ	MUZ-LN35VGHZ2	MUZ-LN50VGHZ	MUZ-LN50VGHZ2	MUZ-LN60VGHZ		
Refrigerant		R32 ⁽¹⁾								
Cooling	Design load	kW	2.5	2.5	3.5	3.5	5	5.0	6.1	
	Annual electricity consumption ⁽²⁾	kWh/a	83	83	129	130	205	230	285	
	SEER		10.5	10.5	9.5	9.4	8.5	7.6	7.5	
		Energy efficiency class	A+++	A+++	A+++	A+++	A+++	A++	A++	
Heating (Warmer Season)	Design load	kW	1.7 (2°C)	1.8 (2°C)	2.0 (2°C)	2.2 (2°C)	2.5 (2°C)	3.3 (2°C)	3.3 (2°C)	
	Declared Capacity	at reference design temperature	kW	1.7 (2°C)	1.8 (2°C)	2.0 (2°C)	2.2 (2°C)	2.5 (2°C)	3.3 (2°C)	3.3 (2°C)
		at bivalent temperature	kW	1.7 (2°C)	1.8 (2°C)	2.0 (2°C)	2.2 (2°C)	2.5 (2°C)	3.3 (2°C)	3.3 (2°C)
		at operation limit temperature	kW	2.5 (-15°C)	2.3 (-25°C)	3.2 (-15°C)	3.1 (-25°C)	4.2 (-15°C)	4.7 (-25°C)	6.0 (-15°C)
	Back up heating capacity	kW	0.0 (2°C)	0.0 (2°C)	0.0 (2°C)	0.0 (2°C)	0.0 (2°C)	0.0 (2°C)	0.0 (2°C)	
	Annual electricity consumption ⁽²⁾	kWh/a	369	382	431	467	602	779	779	
	SCOP		6.4	6.6	6.5	6.5	5.8	5.9	5.9	
		Energy efficiency class	A+++	A+++	A+++	A+++	A+++	A+++		
Heating (Colder Season)	Design load	kW	—	4.7 (-22°C)	—	5.9 (-22°C)	—	8.8 (-22°C)	—	
	Declared Capacity	at reference design temperature	kW	—	2.6 (-22°C)	—	3.4 (-22°C)	—	5.1 (-22°C)	—
		at bivalent temperature	kW	—	3.2 (-10°C)	—	4.0 (-10°C)	—	6.0 (-10°C)	—
		at operation limit temperature	kW	—	2.3 (-25°C)	—	3.1 (-25°C)	—	4.7 (-25°C)	—
	Back up heating capacity	kW	—	2.1 (-22°C)	—	2.5 (-22°C)	—	3.7 (-22°C)	—	
	Annual electricity consumption ⁽²⁾	kWh/a	—	2425	—	3075	—	5340	—	
	SCOP		—	4.0	—	4.0	—	3.4	—	
		Energy efficiency class	—	A+	—	A+	—	A	—	

Type		Inverter Heat Pump				
Indoor Unit		MSZ-FT25VG	MSZ-FT35VG	MSZ-FT50VG		
Outdoor Unit		MUZ-FT25VGHZ	MUZ-FT35VGHZ	MUZ-FT50VGHZ		
Refrigerant		R32 ⁽¹⁾				
Cooling	Design load	kW	2.5	3.5	5.0	
	Annual electricity consumption ⁽²⁾	kWh/a	101	142	243	
	SEER		8.6	8.6	7.2	
		Energy efficiency class	A+++	A+++	A++	
Heating (Warmer Season)	Design load	kW	1.8 (2°C)	2.2 (2°C)	2.7 (2°C)	
	Declared Capacity	at reference design temperature	kW	1.8 (2°C)	2.2 (2°C)	2.7 (2°C)
		at bivalent temperature	kW	1.8 (2°C)	2.2 (2°C)	2.7 (2°C)
		at operation limit temperature	kW	3.0 (-25°C)	3.4 (-25°C)	3.6 (-25°C)
	Back up heating capacity	kW	0.0 (2°C)	0.0 (2°C)	0.0 (2°C)	
	Annual electricity consumption ⁽²⁾	kWh/a	432	527	684	
	SCOP		5.8	5.8	5.5	
		Energy efficiency class	A+++	A+++	A+++	
Heating (Colder Season)	Design load	kW	4.7 (-22°C)	5.9 (-22°C)	7.4 (-22°C)	
	Declared Capacity	at reference design temperature	kW	3.1 (-22°C)	3.7 (-22°C)	4.0 (-22°C)
		at bivalent temperature	kW	3.2 (-10°C)	4.0 (-10°C)	5.0 (-10°C)
		at operation limit temperature	kW	3.0 (-25°C)	3.4 (-25°C)	3.6 (-25°C)
	Back up heating capacity	kW	1.6 (-22°C)	2.2 (-22°C)	3.4 (-22°C)	
	Annual electricity consumption ⁽²⁾	kWh/a	2766	3453	4707	
	SCOP		3.5	3.5	3.3	
		Energy efficiency class	A	A	B	

Type		Inverter Heat Pump											
Indoor Unit		MSZ-A15VGK(P)	MSZ-A20VGK(P)	MSZ-A25VGK(P)	MSZ-A25VGK(P)	MSZ-A35VGK(P)	MSZ-A35VGK(P)	MSZ-A42VGK(P)	MSZ-A42VGK(P)	MSZ-A50VGK(P)	MSZ-A50VGK(P)		
Outdoor Unit		MUZ-A15VGH	MUZ-A20VGH	MUZ-A25VGH	MUZ-A25VGH	MUZ-A35VGH	MUZ-A35VGH	MUZ-A42VGH	MUZ-A42VGH	MUZ-A50VGH	MUZ-A50VGH		
Refrigerant		R32 ⁽¹⁾											
Cooling	Design load	kW	—	—	2.5	2.5	3.5	3.5	4.2	4.2	5.0	5.0	
	Annual electricity consumption ⁽²⁾	kWh/a	—	—	100	100	141	141	186	186	232	232	
	SEER		—	—	8.7	8.7	8.7	8.7	7.9	7.9	7.5	7.5	
		Energy efficiency class	—	—	A+++	A+++	A+++	A+++	A++	A++	A++	A++	
Heating (Warmer Season)	Design load	kW	0.9 (2°C)	1.3 (2°C)	1.3 (2°C)	1.3 (2°C)	1.6 (2°C)	1.6 (2°C)	2.1 (2°C)	2.1 (2°C)	2.3 (2°C)	2.3 (2°C)	
	Declared Capacity	at reference design temperature	kW	0.9 (2°C)	1.3 (2°C)	1.3 (2°C)	1.3 (2°C)	1.6 (2°C)	1.6 (2°C)	2.1 (2°C)	2.1 (2°C)	2.3 (2°C)	2.3 (2°C)
		at bivalent temperature	kW	0.9 (2°C)	1.3 (2°C)	1.3 (2°C)	1.3 (2°C)	1.6 (2°C)	1.6 (2°C)	2.1 (2°C)	2.1 (2°C)	2.3 (2°C)	2.3 (2°C)
		at operation limit temperature	kW	1.6 (-15°C)	1.8 (-20°C)	1.9 (-20°C)	1.9 (-20°C)	2.0 (-20°C)	2.0 (-20°C)	2.7 (-20°C)	2.7 (-20°C)	3.0 (-20°C)	3.0 (-20°C)
	Back up heating capacity	kW	0.0 (2°C)	0.0 (2°C)	0.0 (2°C)	0.0 (2°C)	0.0 (2°C)	0.0 (2°C)	0.0 (2°C)	0.0 (2°C)	0.0 (2°C)	0.0 (2°C)	
	Annual electricity consumption ⁽²⁾	kWh/a	287	350	319	319	376	376	495	495	523	523	
	SCOP		4.7	5.2	5.7	5.7	5.9	5.9	5.9	5.9	6.1	6.1	
		Energy efficiency class	A++	A+++	A+++	A+++	A+++	A+++	A+++	A+++	A+++	A+++	

Type		Inverter Heat Pump		
Indoor Unit		MSZ-AP60VG(K)	MSZ-AP71VG(K)	
Outdoor Unit		MUZ-AP60VG	MUZ-AP71VG	
Refrigerant		R32 ⁽¹⁾		
Cooling	Design load	kW	6.1	
	Annual electricity consumption ⁽²⁾	kWh/a	288	
	SEER		7.4	
		Energy efficiency class	A++	
Heating (Warmer Season)	Design load	kW	2.5 (2°C)	
	Declared Capacity	at reference design temperature	kW	2.5 (2°C)
		at bivalent temperature	kW	2.5 (2°C)
		at operation limit temperature	kW	3.7 (-15°C)
	Back up heating capacity	kW	0.0 (2°C)	
	Annual electricity consumption ⁽²⁾	kWh/a	627	
	SCOP		5.5	
		Energy efficiency class	A+++	

Type		Inverter Heat Pump					
Indoor Unit		MSZ-EF25VG		MSZ-EF35VG		MSZ-EF42VG	MSZ-EF50VG
Outdoor Unit		MUZ-EF25VG	MUZ-EF25VGH	MUZ-EF35VG	MUZ-EF35VGH	MUZ-EF42VG	MUZ-EF50VG
Refrigerant		R32 ⁽¹⁾					
Cooling	Design load	kW	2.5	2.5	3.5	3.5	4.2
	Annual electricity consumption ⁽²⁾	kWh/a	96	96	139	139	186
	SEER		9.1	9.1	8.8	8.8	7.9
		Energy efficiency class	A+++	A+++	A+++	A+++	A++
Heating (Warmer Season)	Design load	kW	1.3 (2°C)	1.3 (2°C)	1.6 (2°C)	1.6 (2°C)	2.1 (2°C)
	Declared Capacity	at reference design temperature	kW	1.3 (2°C)	1.3 (2°C)	1.6 (2°C)	1.6 (2°C)
		at bivalent temperature	kW	1.3 (2°C)	1.3 (2°C)	1.6 (2°C)	1.6 (2°C)
		at operation limit temperature	kW	2.0 (-15°C)	2.0 (-15°C)	2.4 (-15°C)	2.4 (-15°C)
	Back up heating capacity	kW	0.0 (2°C)	0.0 (2°C)	0.0 (2°C)	0.0 (2°C)	
	Annual electricity consumption ⁽²⁾	kWh/a	311	311	398	398	
	SCOP		5.9	5.9	5.6	5.6	
		Energy efficiency class	A+++	A+++	A+++	A+++	

Type		Inverter Heat Pump			
Indoor Unit		MSZ-BT20VG	MSZ-BT25VG	MSZ-BT35VG	MSZ-BT50VG
Outdoor Unit		MUZ-BT20VG	MUZ-BT25VG	MUZ-BT35VG	MUZ-BT50VG
Refrigerant		R32 ⁽¹⁾			
Cooling	Design load	kW	2.0	2.5	3.5
	Annual electricity consumption ⁽²⁾	kWh/a	86	108	180
	SEER		8.1	8.1	6.8
		Energy efficiency class	A++	A++	A++
Heating (Warmer Season)	Design load	kW	0.9 (2°C)	1.1 (2°C)	1.3 (2°C)
	Declared Capacity	at reference design temperature	kW	0.9 (2°C)	1.1 (2°C)
		at bivalent temperature	kW	0.9 (2°C)	1.1 (2°C)
		at operation limit temperature	kW	1.3 (-15°C)	1.7 (-15°C)
	Back up heating capacity	kW	0.0 (2°C)	0.0 (2°C)	0.0 (2°C)
	Annual electricity consumption ⁽²⁾	kWh/a	234	268	304
	SCOP		5.3	5.7	5.4
		Energy efficiency class	A+++	A+++	A+++

Type		Inverter Heat Pump					
Indoor Unit		MSZ-HR25VF	MSZ-HR35VF	MSZ-HR42VF	MSZ-HR50VF	MSZ-HR60VF	MSZ-HR71VF
Outdoor Unit		MUZ-HR25VF	MUZ-HR35VF	MUZ-HR42VF	MUZ-HR50VF	MUZ-HR60VF	MUZ-HR71VF
Refrigerant		R32 ⁽¹⁾					
Cooling	Design load	kW	2.5	3.4	4.2	5.0	6.1
	Annual electricity consumption ⁽²⁾	kWh/a	141	191	226	269	296
	SEER		6.2	6.2	6.5	6.5	7.2
		Energy efficiency class	A++	A++	A++	A++	A++
Heating (Warmer Season)	Design load	kW	1.1 (2°C)	1.3 (2°C)	1.6 (2°C)	2.1 (2°C)	2.5 (2°C)
	Declared Capacity	at reference design temperature	kW	1.1 (2°C)	1.3 (2°C)	1.6 (2°C)	2.1 (2°C)
		at bivalent temperature	kW	1.1 (2°C)	1.3 (2°C)	1.6 (2°C)	2.1 (2°C)
		at operation limit temperature	kW	1.9 (-10°C)	2.4 (-10°C)	2.9 (-10°C)	3.8 (-10°C)
	Back up heating capacity	kW	0.0 (2°C)	0.0 (2°C)	0.0 (2°C)	0.0 (2°C)	
	Annual electricity consumption ⁽²⁾	kWh/a	289	344	427	558	
	SCOP		5.3	5.2	5.2	5.2	
		Energy efficiency class	A+++	A+++	A+++	A+++	

Type		Inverter Heat Pump			
Indoor Unit		MSZ-DW25VF	MSZ-DW35VF	MSZ-DW50VF	
Outdoor Unit		MUZ-DW25VF	MUZ-DW35VF	MUZ-DW50VF	
Refrigerant		R32 ⁽¹⁾			
Cooling	Design load	kW	2.5	3.4	
	Annual electricity consumption ⁽²⁾	kWh/a	135	184	
	SEER		6.2	6.2	
		Energy efficiency class	A++	A++	
Heating (Warmer Season)	Design load	kW	1.1 (2°C)	1.3 (2°C)	
	Declared Capacity	at reference design temperature	kW	1.1 (2°C)	1.3 (2°C)
		at bivalent temperature	kW	1.1 (2°C)	1.3 (2°C)
		at operation limit temperature	kW	1.9 (-10°C)	2.4 (-10°C)
	Back up heating capacity	kW	0.0 (2°C)	0.0 (2°C)	
	Annual electricity consumption ⁽²⁾	kWh/a	287	351	
	SCOP		5.3	5.1	
		Energy efficiency class	A+++	A+++	

(1) Refrigerant leakage contributes to climate change. Refrigerant with lower global warming potential (GWP) would contribute less to global warming than a refrigerant with higher GWP, if leaked to the atmosphere. This appliance contains a refrigerant fluid with a GWP equal to 675. This means that if 1 kg of this refrigerant fluid would be leaked to the atmosphere, the impact on global warming would be 675 times higher than 1 kg of CO₂, over a period of 100 years. Never try to interfere with the refrigerant circuit yourself or disassemble the product yourself and always ask a professional.

(2) Energy consumption based on standard test results. Actual energy consumption will depend on how the appliance is used and where it is located.